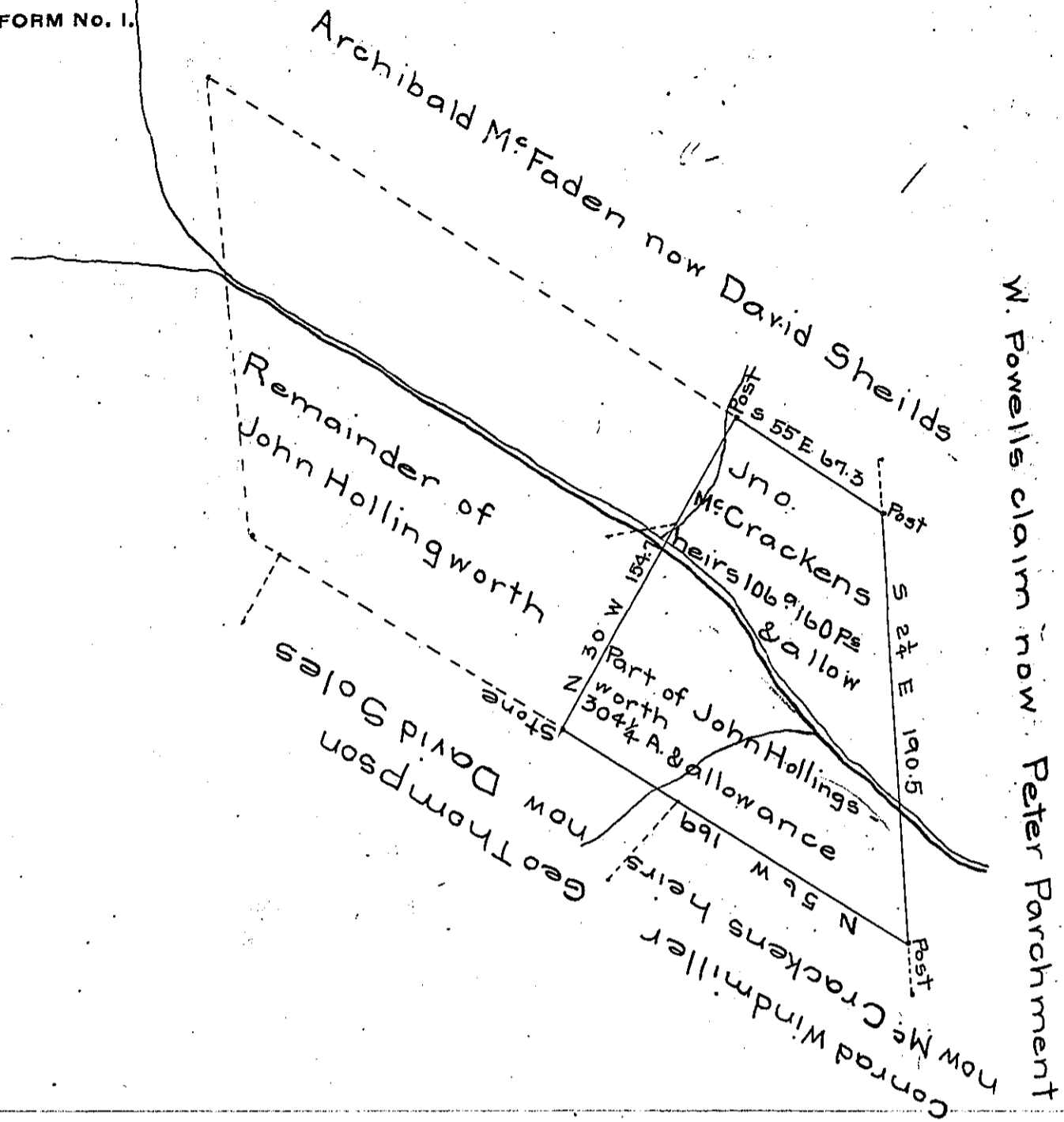


FORM No. 1.



A draft of a tract of land surveyed November 24<sup>th</sup> 1851 for the heirs of John M<sup>c</sup>Cracken containing <sup>106</sup> A. 160 pr. & allowance of six pr. cent. It being part of a tract of 304 1/2 A. & allowance situate on Turtle creek hill in Bedford County now Wilkins township Allegheny County and originally surveyed the 6<sup>th</sup> day of July 1770 in pursuance of an order granted to John Hollingsworth for 300 acres dated April 3<sup>rd</sup> 1769. N<sup>o</sup> 664.

W<sup>m</sup> West C.S.

To J. Porter Brawley Esq<sup>r</sup>

S.G.

*IN TESTIMONY* that the above is a copy of the original remaining on file in the Department of Internal Affairs of Pennsylvania, made conformably to an Act of Assembly approved the 16th day of February, 1833, I have hereunto set my Hand and caused the Seal of said Department to be affixed at Harrisburg, this twenty-third day of February 1906

*Loach R. Brown*  
 Secretary of Internal Affairs